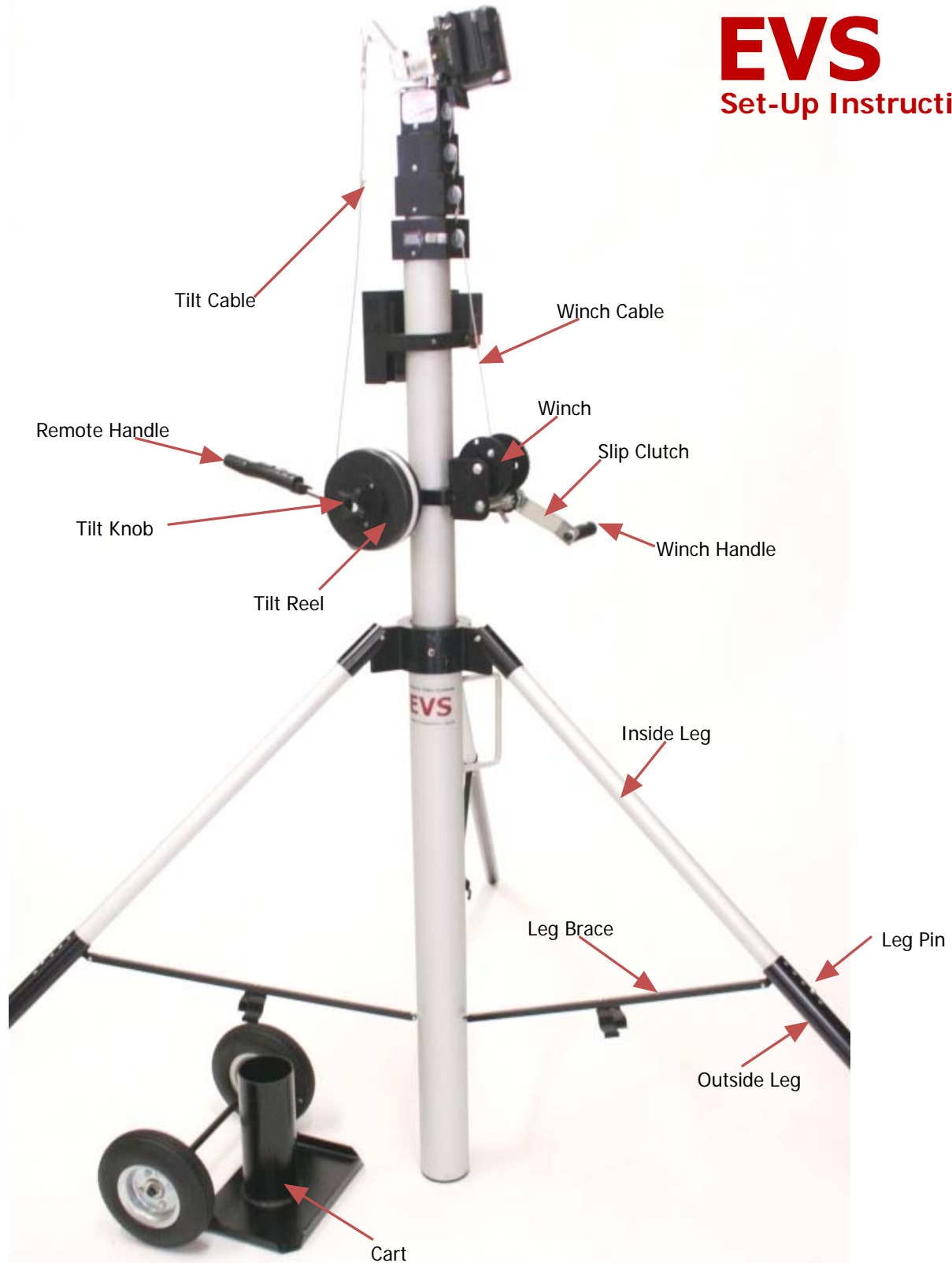


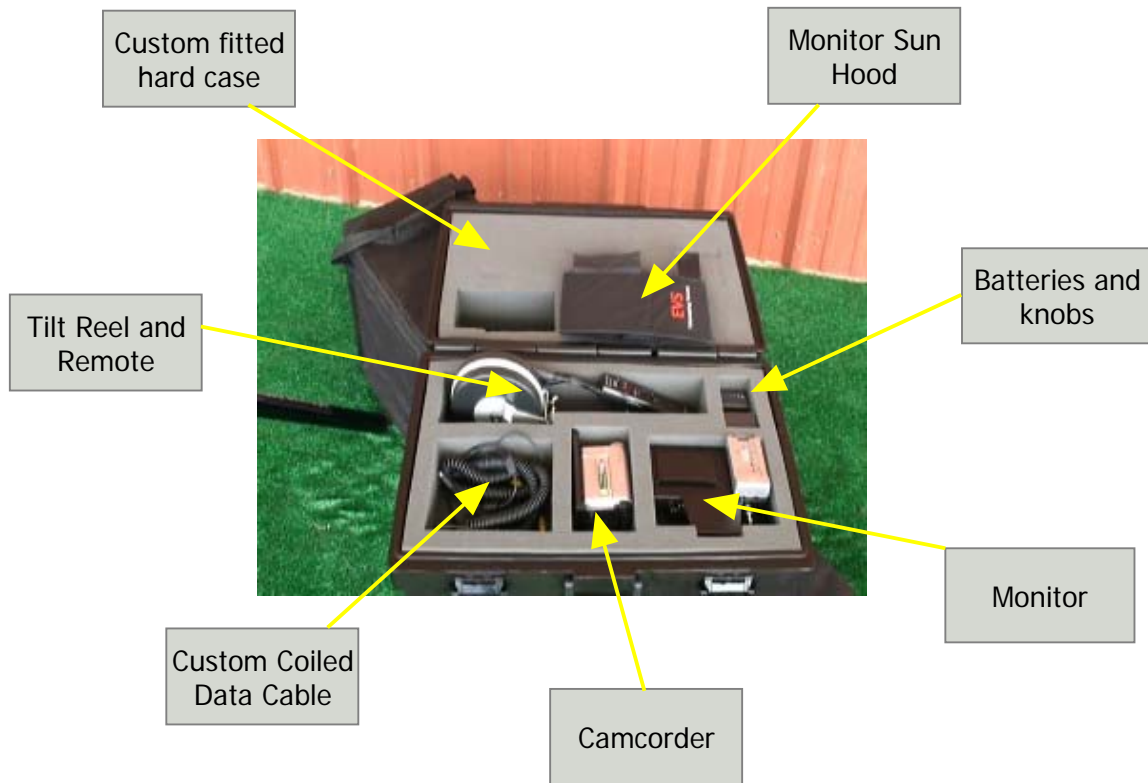
Precautions should always be taken before operation of any EVS tower. Always take into consideration wind speeds, lightning in the area and other potential dangers when setting up the system.

EVS

Set-Up Instructions



Once you receive and open all packages, your components should be stored in the provided hard case as shown below.

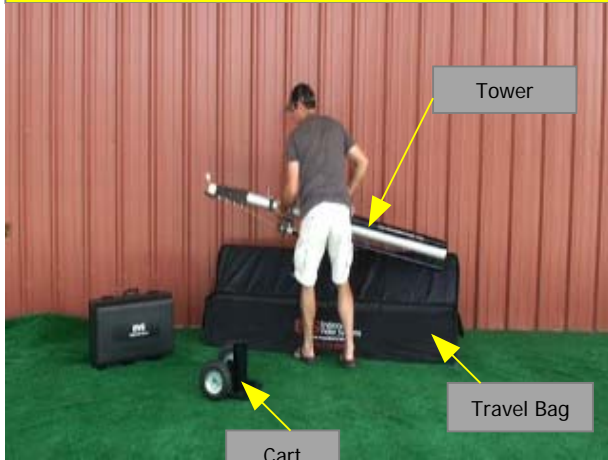


All components and parts except the tower and cart should be stored inside the hard case when not in use. The hard case is provided to help prevent damage to the components and parts.

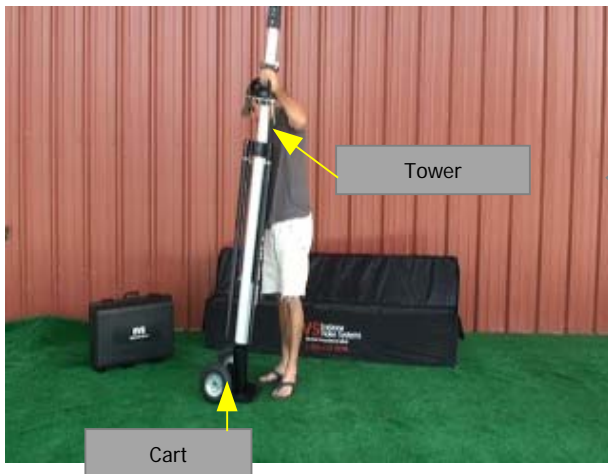
Hard Case Configuration

Tower Preparation

Due to inconsistencies of set up sites EVS is not responsible for damage due to fallen towers. It is the responsibility of the user to determine a safe site and to properly set up the tower. EVS does not recommend using the tower in winds over 20 mph or if there is the slightest chance of lightning in the area. All safety issues are at the users discretion.



Carefully lift the tower out of it's travel bag.



Place the tower into the cart. This will allow you to roll the tower to a safe and level place.

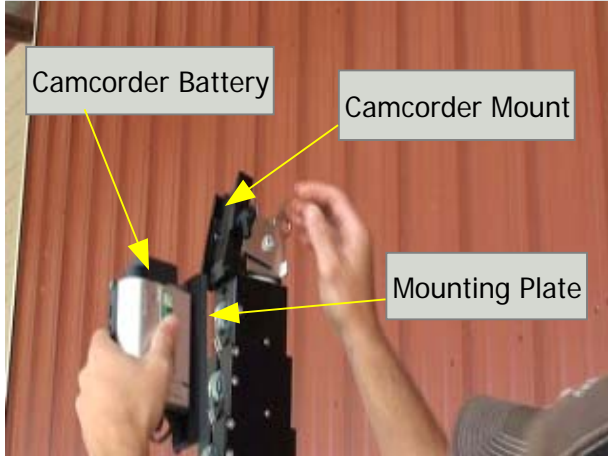
TOWER SHOULD ALWAYS BE POSITIONED ON A LEVEL SURFACE AND AT A SAFE DISTANCE FROM THE ACTIVITY BEING TAPED.



Extend all 3 support legs before continuing the remaining set up.

The support legs are not designed to lift the entire system off the ground. Keep the base of the main mast on the ground.

Camcorder Preparation



First check to see that you have....

- ✓ Connected the fully charged battery
- ✓ Turned the camcorder's power on
- ✓ Opened the camcorder's lens cover
- ✓ Attached the mounting plate to the camcorder

Now, slide the mounting plate onto the tower's camcorder mount.



As you are sliding the plate onto the mount you will hear a click that tells you the safety pin has been engaged. This will keep the camcorder from coming back out of the mount until you press the release button.

You want to make sure to position the camcorder in the center of the mount and then securely tighten the knob to hold the camcorder firmly in place.

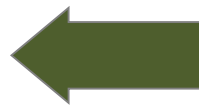


Press the release button after loosening the securing knob when you are taking the camcorder off the tripod.

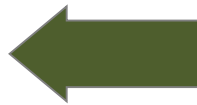
Preparing and Attaching Monitor



Charge the monitor battery (QM91D) with included battery charger (BC-TRM)



Attach battery to adapter plate on back of the monitor



Locate the threaded mounting hole located on the underside of the monitor

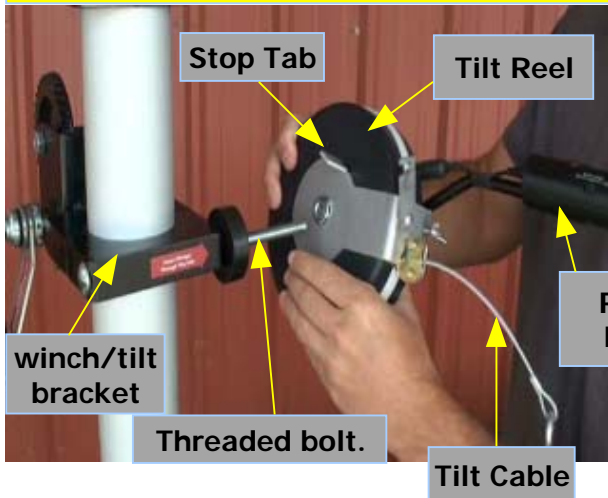


Use the screw located on the monitor mount to secure the monitor to the tripod.

Press the power button to turn the monitor on

Put the monitor into ~~VCS~~ mode by pressing the mode button. CVBS

Adding the Tilt Reel



Slide tilt reel onto threaded bolt making sure that the stop tab is on the inside and above the winch/tilt bracket.



Rotate the tilt bracket so that the remote is pointing straight up to the sky and the stop tab is resting on the winch/tilt bracket.



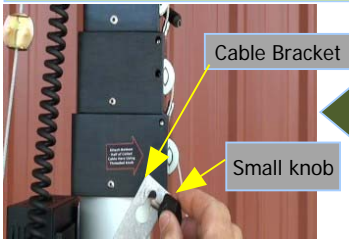
Use the large knob to tighten tilt reel into this position.



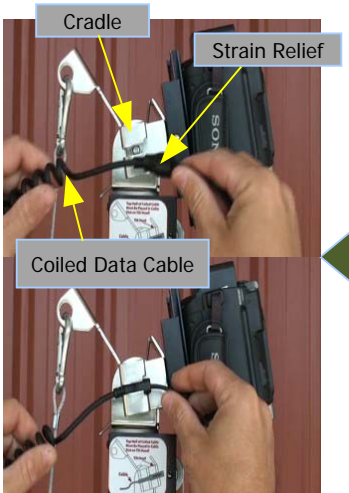
Pull tilt cable up to tilt arm and attach the cable by hooking the hole in the arm.

**Leave tilt reel in this position until after you crank the system up!
Instructions for clamping tilt cable will be later!**

Data Cable Connections



Place the small knob through the hole in the cable bracket and tighten into the threaded hole. Must tighten securely down so that the bracket does not swing or move.



For the camcorder connection place the top of the cable through the slot in the cradle. Let the strain relief on the cable rest inside the cradle.



Plug the "Half Moon" shaped plug into the camcorder



At the bottom of the cable plug the black 2.5 stereo jack coming from the remote into the black plug coming from the coiled data cable.



Finally, plug the yellow RCA jack into the monitor. This plug is located in the back and underneath the battery.

Raising the tower



Before cranking the tower check to see if....

- ✓ Everything is connected and working
- ✓ you are getting the picture
- ✓ the remote operates the camcorder
- ✓ the tilt reel is in the correct position
- ✓ the tilt latch on the reel is open

Tilt Latch



Standing where the winch is mounted begin turning the handle in a clockwise direction using your right hand. As the tower is being raised hold the coiled data cable in your left hand making sure it does not get snagged on the way up.

Operation of Tilt Reel



Rotate the reel towards you by gripping the remote handle until the tilt cable is laying between the tilt clamp and wing nut.



Now close the tilt clamp so that the tilt cable is now underneath the clamp.



Clamp down on the cable by tightening the wing nut. This should be tight enough so that the cable does not slip.



It is ready for use and as you move the remote up and down the camcorder should also move accordingly.